

# CLACKAMAS COMMUNITY COLLEGE:

## Shuttle Service and Access Plan





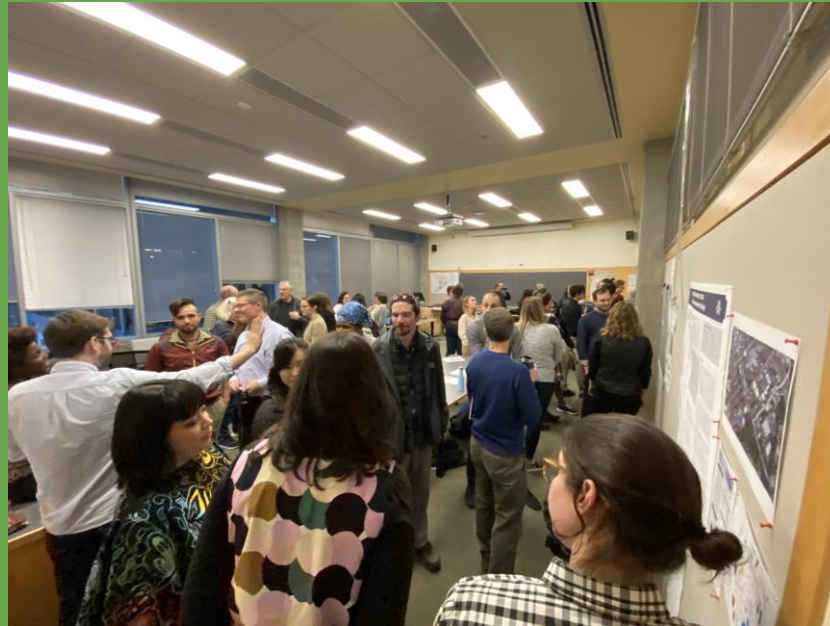
Portland State  
UNIVERSITY

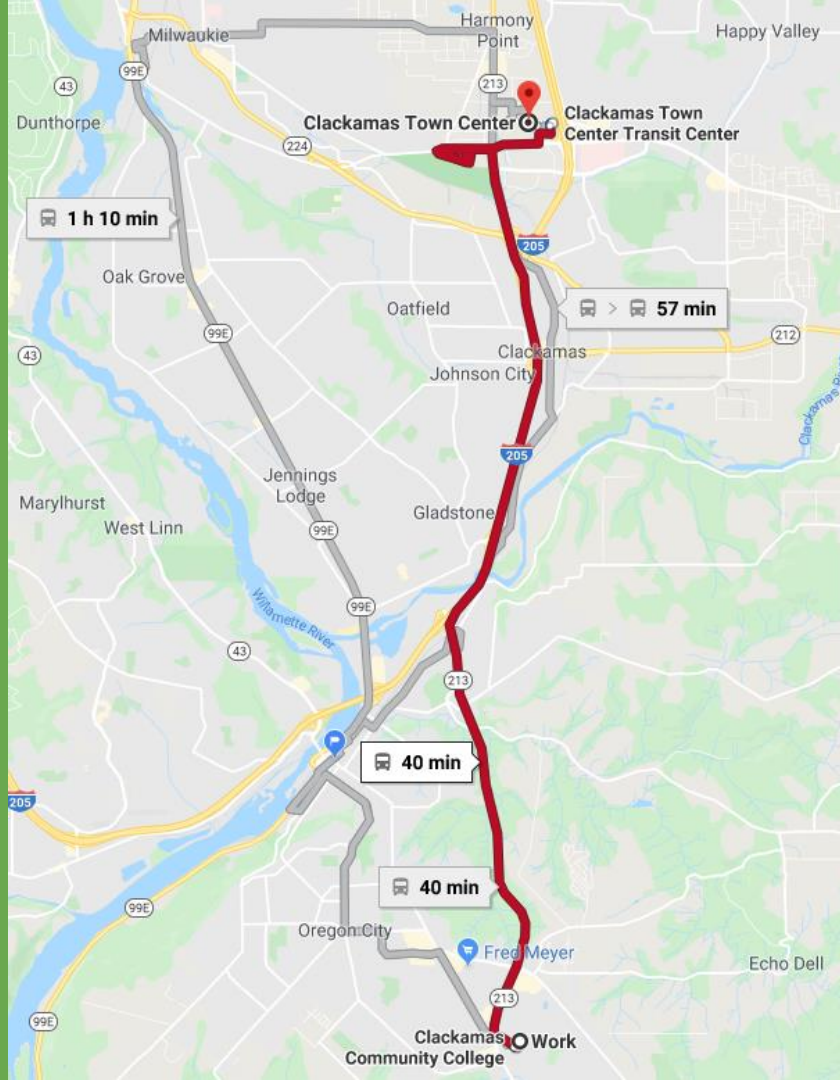
College of Urban & Public Affairs:  
Nohad A. Toulam School of Urban Studies & Planning

- Project selected by Master of Urban and Regional Planning (MURP) team from PSU



CONEXION  
STUDIO







# Equity Areas Update – 25% of blocks

## TriMet District Top 25th Percentile of Equity Index Scores



## Downtown Portland



Create Date: 04/21/2020

Data: Metro RJIS, TriMet, US Census Bureau, 2014-2018 American Community Survey 5-Year Estimates Tables B01001, B03002, B06203, B18101, B25056, B25075, B25075, B25095, C8001, C1002, and Longitudinal Employer-Household Dynamics table er\_wac\_5000\_1706\_2017

Project Location: G:\PUBLIC\GIS\Title\_37\Equity\_Index\2020\ggs\_project\TriMet\_Equity\_Index\_25\_Percentile.ggs

# Project Phases – Coronavirus impacted project

## JANUARY - MARCH 2020

- SCOPING
- TIMELINE
- MOU
- STUDENT ENGAGEMENT PLAN
- WORK PLAN

## APRIL - MAY 2020

- COVID19
- ONLINE SURVEY [APRIL 8 - APRIL 19]
- ONE-ON-ONE STUDENT INTERVIEWS

## MAY 2020 - JUNE 2020

- ANALYZE SURVEY
- ANALYZE INTERVIEWS
- ANALYZE CONTEXT
- DRAFT CHAPTERS

## JUNE 8, 2020

- PLAN DUE

# Plan Chapters

- **Context**
- **Student Transportation Barriers**
- **Recommendations**
- **Performance Metrics & Future Planning**

# Student Engagement

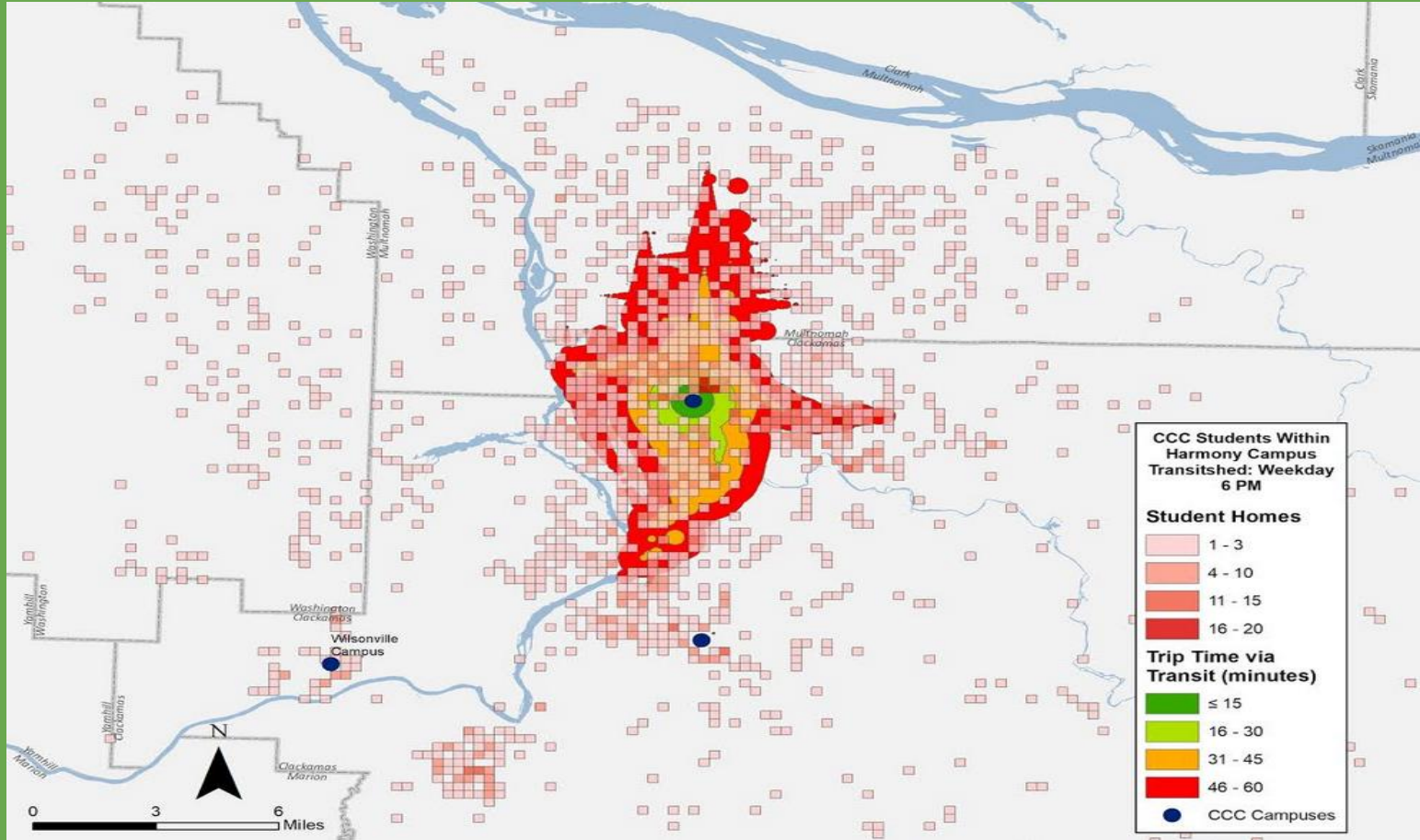
- **In-person outreach before coronavirus**
- **Online Survey from April 8-19**
  - **569 Responses**
- **20 Student Interviews**
  - **Outreach Process**
    - **November 2019 on-board intercept shuttle survey**
    - **ASG, student clubs and resources**
    - **April 2020 Shuttle Survey respondents**

# Initial Shuttle Analysis

- 19% of Harmony and 15% of Oregon City respondents **ride CCC Xpress Shuttle** at least once per week
- **“Shuttle stops closer to my home and work”** would encourage students to ride shuttle more



# Students Live Everywhere



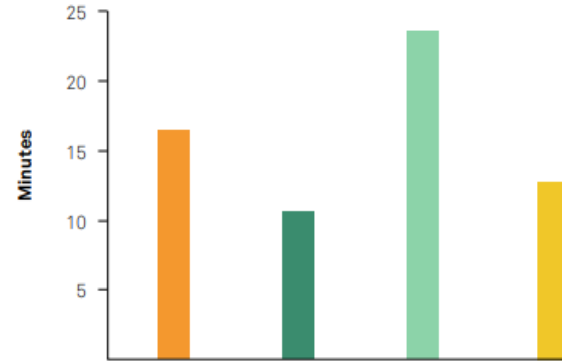
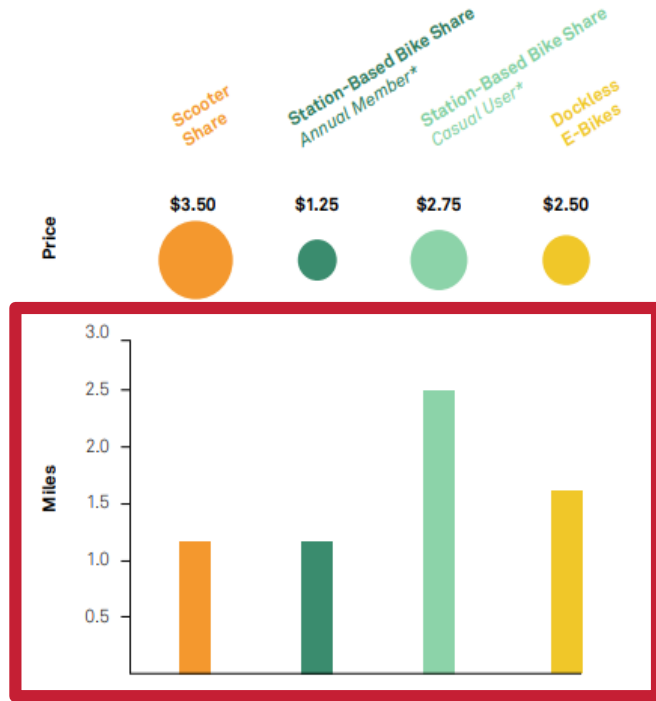
# Bikeshare and scootershare need to use station



# Initial Bikeshare/Scootershare Analysis between CTC Transit Center and Harmony

- 32% of Harmony respondents would use **bikeshare** for some or many trips
- 34% of Harmony respondents would use **scootershare** for some or many trips
- Main reasons students avoid bikeshare and scootershare
  - Satisfaction with current commute
  - Bad weather

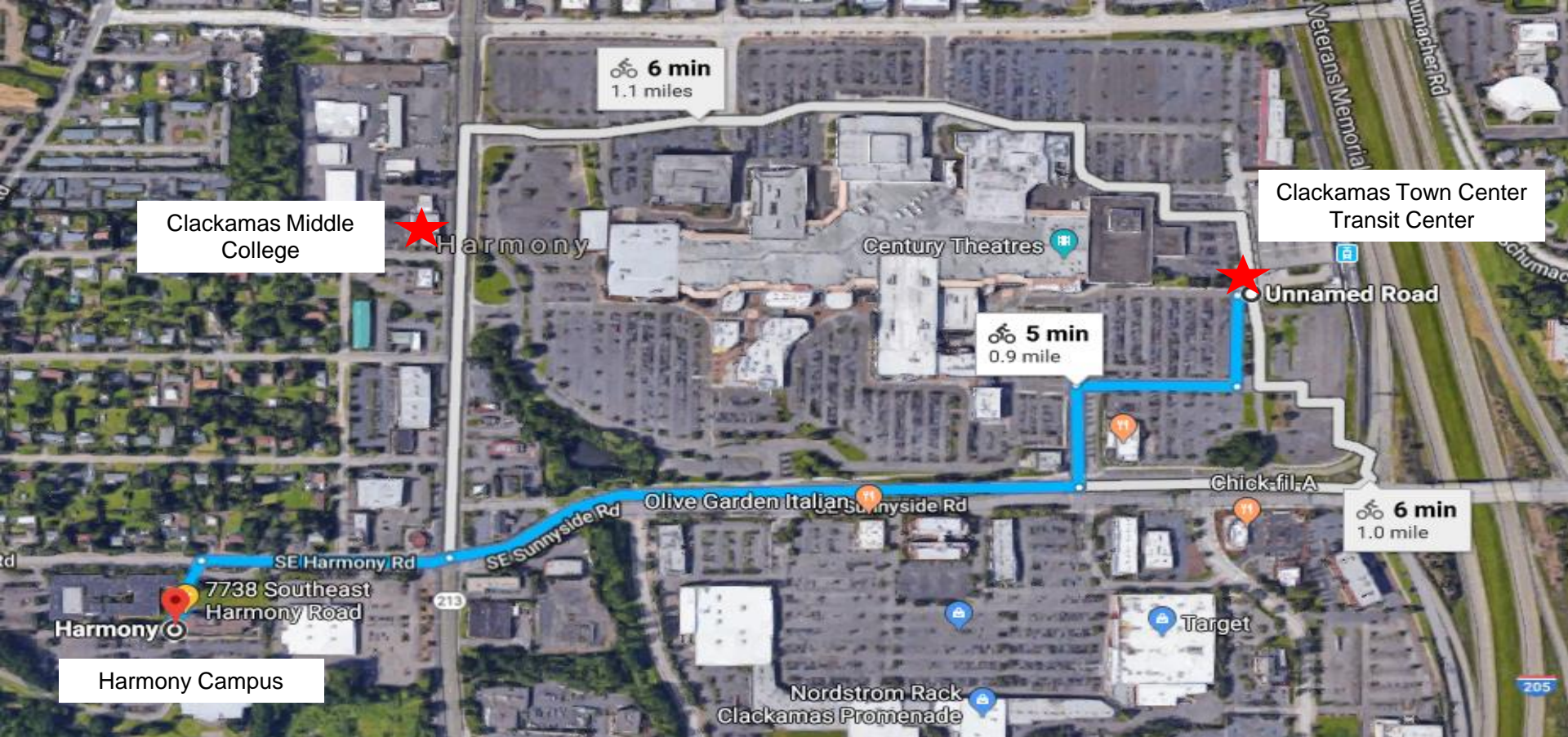
# Average Bikeshare and Scootershare Trip is 1.2 Miles



\*Based on data from Capital Bike Share, Bluebikes, Citi Bike, Divvy, and Ford GoBike



# Bike/Scoot: Clackamas Town Center Transit Center and Harmony Campus





# New Shuttle Stops

CCC is considering whether to add new shuttle stops. Add comments using the "Add Comment" button in the top right corner.

Filters ▾

CCC Xpress Shuttle

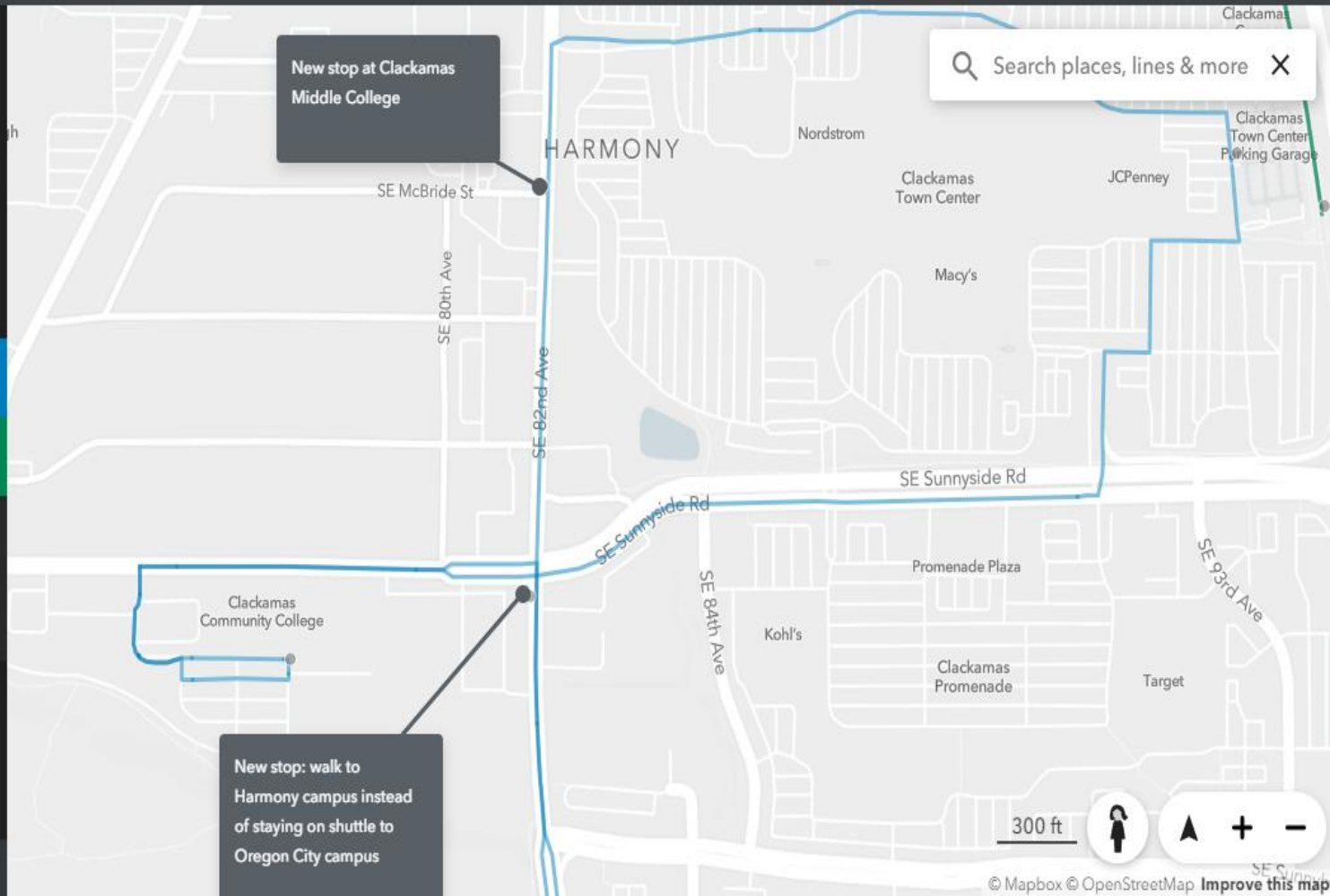
MAX Green Line

Within 0.25 mi of stops:

31,928 population

65,554 jobs

Hide ▲



New stop at Clackamas Middle College

New stop: walk to Harmony campus instead of staying on shuttle to Oregon City campus

Search places, lines & more X

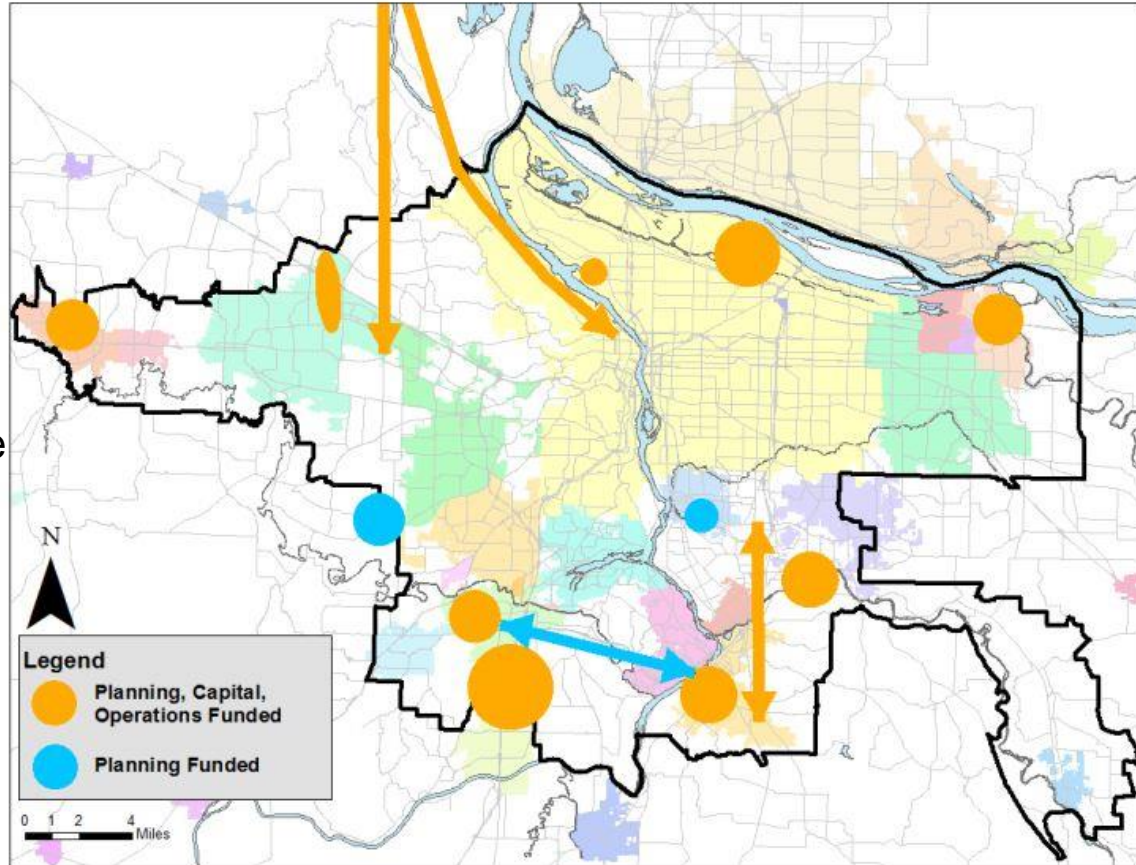
300 ft [Navigation icons]



# Regional Coordination Projects

FY 2019-21

- Clackamas Industrial Shuttle
- Milwaukie Industrial Area Shuttle
- Oregon City Last-Mile Shuttle
- Tualatin/West Linn/Oregon City Shuttle





Clackamas  
Community College

COUGAR STRONG

Express  
SHUTTLE  
Clackamas  
Community College

COUGAR STRONG

Clackamas  
Community College

**Questions? Comments? Concerns?**

**Ray Atkinson**

**[ray.atkinson@clackamas.edu](mailto:ray.atkinson@clackamas.edu)**

# Equity Areas Update

## Equity Index 10 Factor Analysis:

- Low income population (200% of poverty)
- People of color
- Limited English proficiency
- People with disabilities
- Senior population
- Youth population
- Low & medium wage jobs
- Limited vehicle access
- Affordable housing units
- Key retail/human/social services

**FY19-21 Map: Top quartile composed the equity areas**

**Request to see equity area maps displaying 15%, 20%, 25% & 30% scoring blocks**